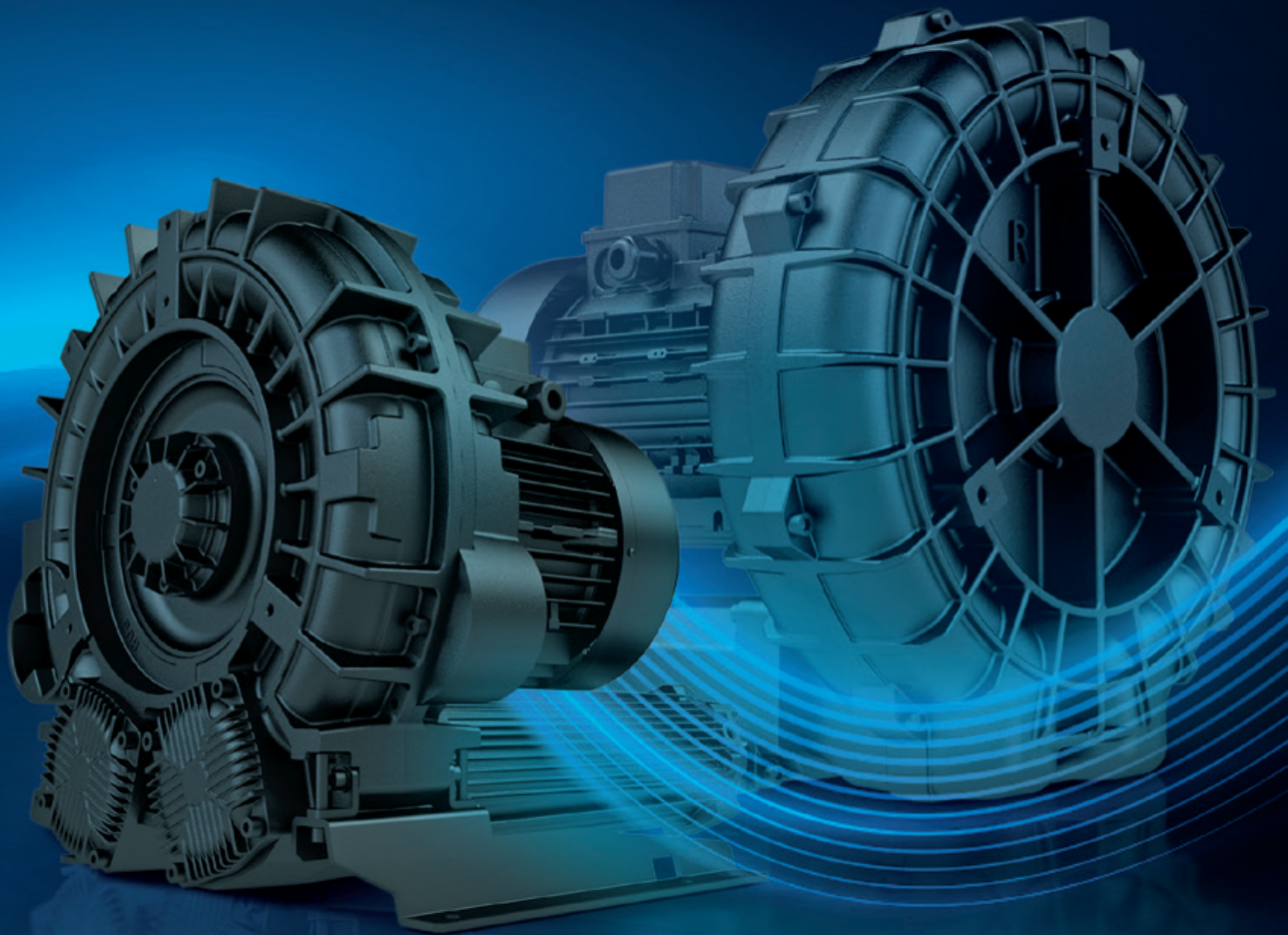


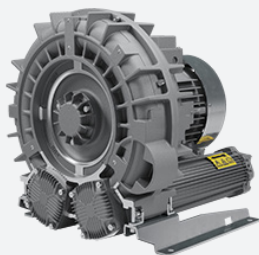


Technical Superiority Delivered



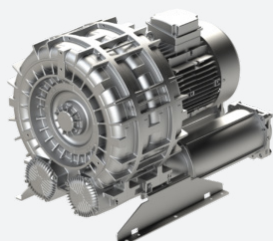
FPZ

Side channel blowers



**MS - Single Stage / Single
Impeller Blowers**

**MD - Single Impeller
Blowers / Double stage**



**TS - Twin Impeller /
Single Stage**

**TD - Twin Impeller
/ Double stage**

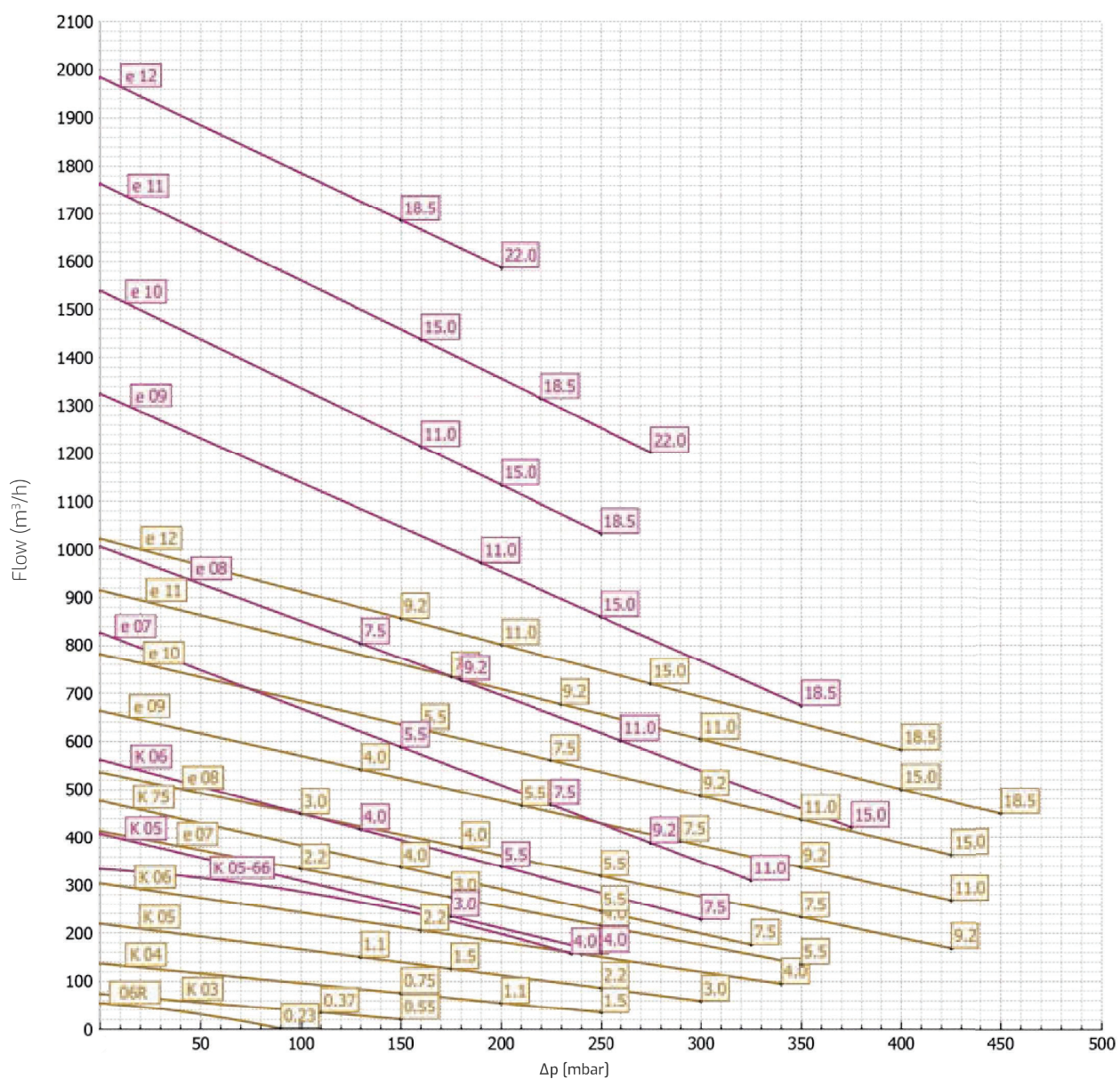


**Blowers with Explosion
proof motor**

Side Channel Blowers

MS TS

Compression **50Hz**



Static differential pressure (mbar)

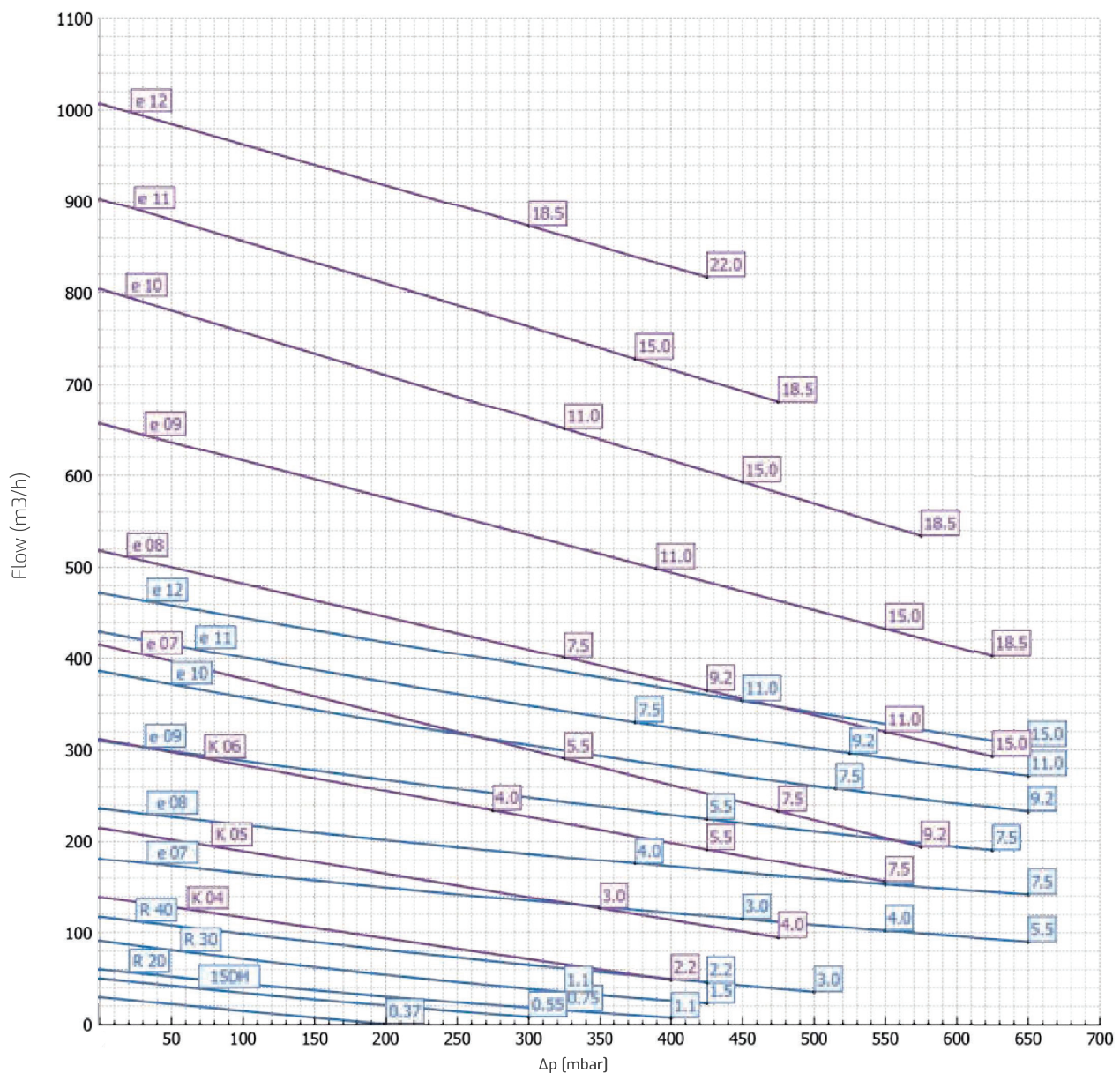
Tolerance on indicated values +/- 10%. Specifications subject to change without notice.
Curves refer to air at 20°C and 1013 mbar (abs) atmospheric pressure.

Performances in compression

50HZ

MD TD

Compression **50Hz**



Static differential pressure (mbar)

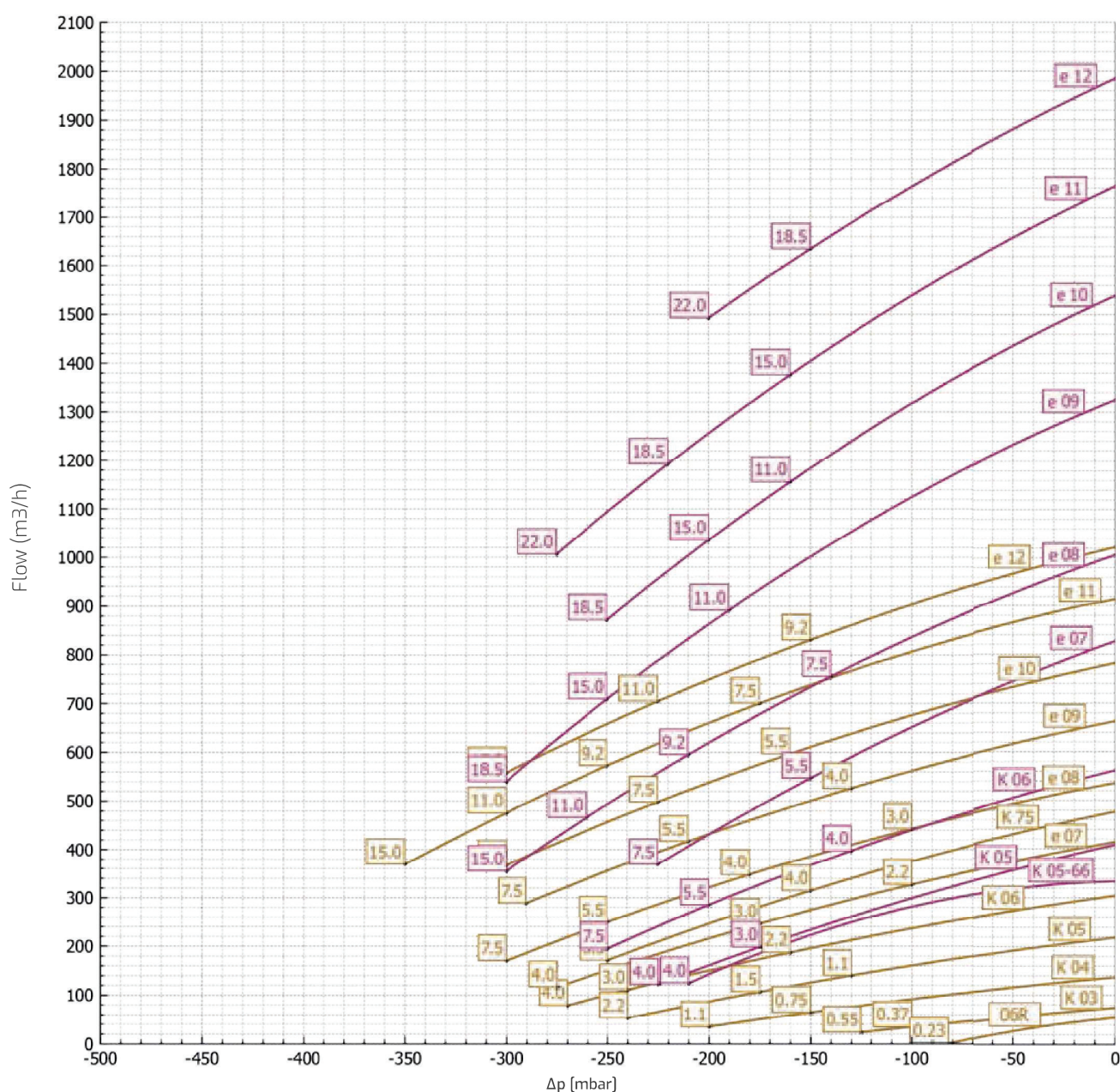
Tolerance on indicated values +/- 10%. Specifications subject to change without notice.

Curves refer to air at 20°C and 1013 mbar (abs) atmospheric pressure.

Side Channel Blowers

MS TS

Suction **50Hz**



Static differential pressure (mbar)

Tolerance on indicated values +/- 10%. Specifications subject to change without notice.

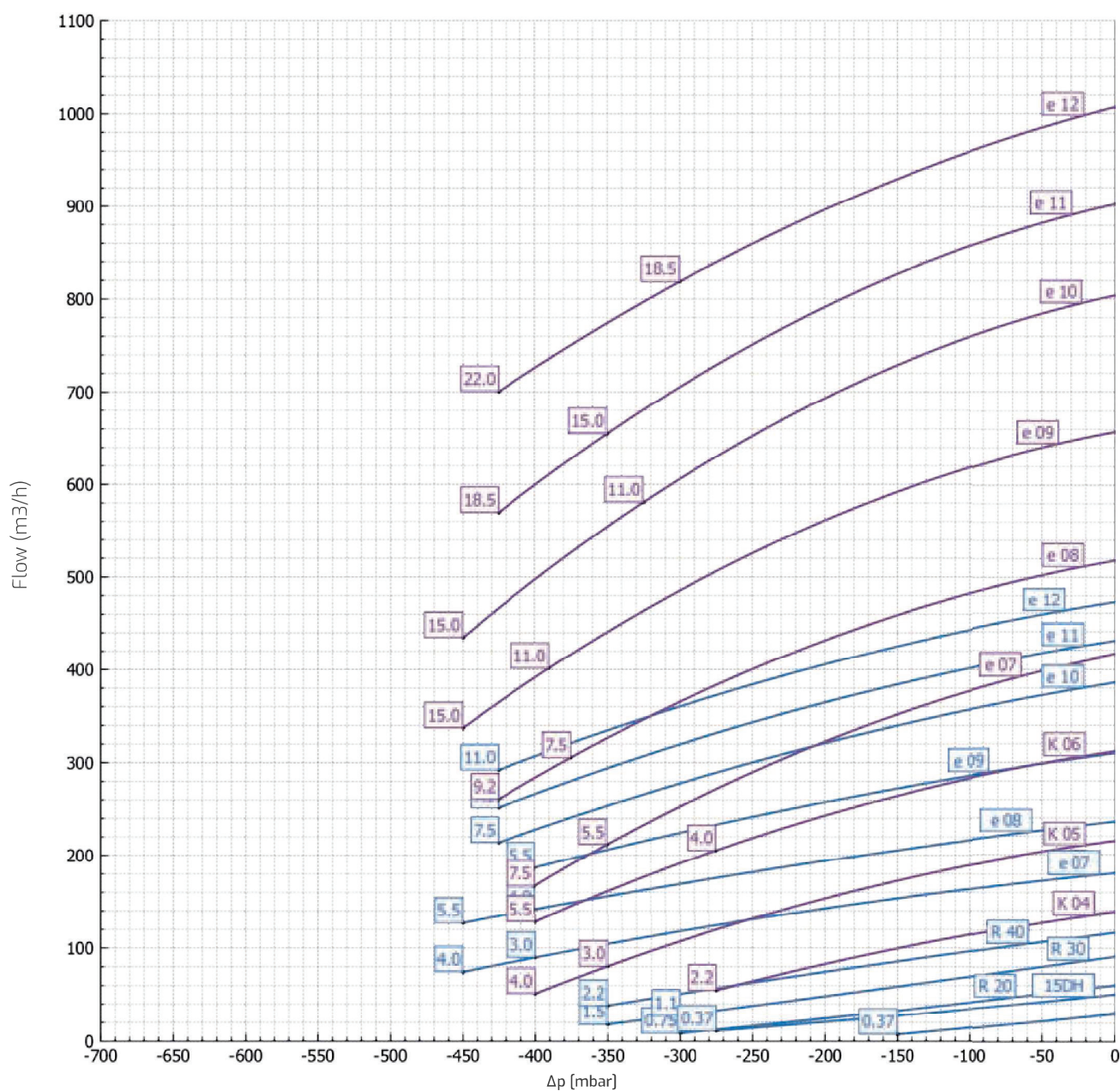
Curves refer to air at 20°C and 1013 mbar (abs) atmospheric pressure.

Performances in compression

50HZ

MD TD

Suction **50Hz**



Static differential pressure (mbar)

Tolerance on indicated values $\pm 10\%$. Specifications subject to change without notice.

Curves refer to air at 20°C and 1013 mbar (abs) atmospheric pressure.

FPZ ATEX blowers

A unique ATEX 2G and 3GD range.

The FPZ range of products consists of a family of blowers/exhausters specially designed for use in ATEX environments (ATmosphere EXplosive). The machines are suitable for transporting potentially explosive fluids such as methane, biogas and technical gases in compression and vacuum systems.

FPZ blowers can work in compliance with the ATEX directive in the Zones classified 1, 2 and 22, within Group II and are available in Category 2G and 3GD. The technical performances of the 2G blowers/exhausters have been recorded with the Notification Board No. 0948 TUV ITALIA Srl which guarantees the real safety of the product and full compliance with current regulations.



IATEX 2G
ZONE 1



IATEX 3GD
ZONES 2 - 22




IATEX 3GD MOR
ZONES 2 - 22

The benefits



ATEX
CERTIFICATION



EASY
TO INSTALL



HIGH EFFICIENCY
IMPELLER



LOW NOISE
MACHINERY

FPZ accessories

An accessory line designed to fully integrate with FPZ's systems.

FPZ can offer a full range of accessories, which can ensure ideal performances, efficiency and reliability, also due to their excellent pairing with our blowers.

The solutions provided by FPZ can professionally meet the need of all industry sector, both thanks to our many years of expertise and to our team of engineers and experts, always ready to help.



The advantages of choosing FPZ accessories



PROVEN
RELIABILITY



LAST
LONGER



PERFECT
FUNCTIONALITY

Accessories for blowers

FA

Suction filter
for interiors



FV

In line
cartridge filter



FL

Suction
cartridge filter



TR

Section



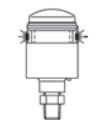
FC

In line cartridge
cyclone filter



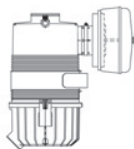
IN

Dust load
indicators



FD

Cartridge
cyclone double
filter



FS/FD

Bracket



CA

Manifold



MC/MV

Pressure gauge
vacuum gauge



IP

Intake
protection



MP

Hose sleeve



PK

Hose flange
for blower



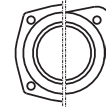
VK

Flange



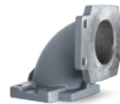
TF

Threaded
flange



CK

Manifold



PV

Valve holder



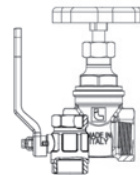
NP

Nipple



VM/VN

Ball valve /
gate valve



VC

Non-return
valve



VRL

Vacuum /
pressure relief
valve



RV/VLA

Vacuum /
pressure relief
valve



SI

In line
silencer



SS

Final
silencer



IH/SC

Soundproof
cabin



Accessories for ATEX environment

MC/MA

Pressure gauge



TC/TA

Pressure
transducer



TE

Bimetallic
thermometer



FF

Filter



FM

Antivibration
joints



Flow reversing valves

VI

Flow
reversing
valve



VS

Flow
reversing
valve



Adapter for
SCL K04



Adapter for
SCL K05 – K06



Windblade™ Air Knife Aluminum



DRYING
water and residue removal

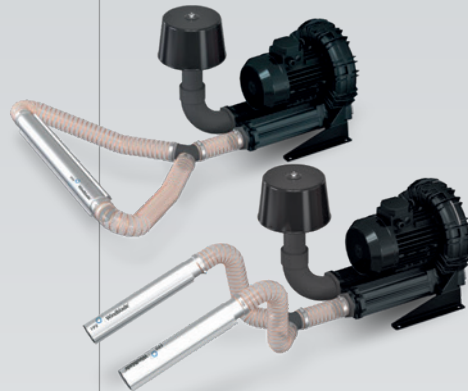


COOLING DOWN
for plastic products and metal parts



CLEANING
material residue removal, dust and
machining residue removal

Central input
configuration example



Configuration example
for 2 single input blades

Windblade™ Air Knife AISI 304 steel



ANTICORROSION
Ideal for aggressive environments

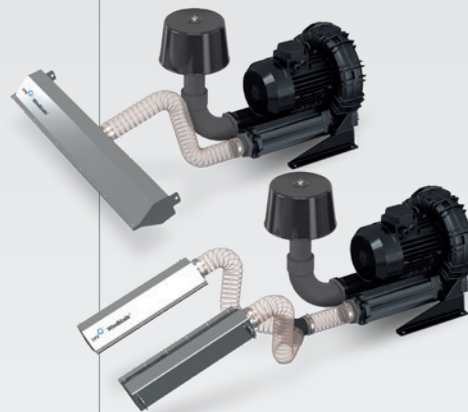


AISI 304 STEEL
Construction in AISI 304 steel



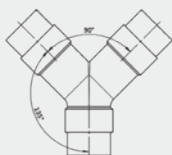
WIDE RANGE OF USE
Ideal for drying, cooling and cleaning

Central input
configuration example

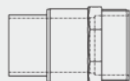


Configuration example
for 2 single input blades

Component for application



Y connection



Tube holder
reductions



Flexible
sleeve

APPLICATIONS





CONTACT US

Durel International LLP

+91 9003996825
+91 89259 67579
info@durel.co.in
www.durel.co.in

Door No. 88/93, Ground Floor,
Scheme Road, Kamdar Nagar,
Chennai – 600034