

BUCKLEYS

MANUFACTURERS OF SPECIALIST TEST EQUIPMENT

Lab Pro2 mains-powered pinhole detector



hipot testing and pinhole detection



Hipot testing and pinhole detection

The Lab Pro2 is a precision Pinhole detector that is mains powered. This can be used in industries such as hipot testing for the inspection and testing of electrical insulation and for verifying that shielded items within an assembly are sufficiently protected.

The Lab Pro2 range

The Lab Pro2 is available with a convenient folding desk stand/handle and the wide range of accessories and electrodes available enables the user to tailor the Lab Pro2 to a host of test requirements.

The Lab Pro2 is the result of an exhaustive research, development and design programme; bringing the latest technology to the instrument along with an all-new user interface and a large multi-colour display.

Navigating the menus and settings is simple and the Lab Pro2 is the safest and most accurate instrument Buckleys have made to date.

Mains powered; the Lab Pro2's built-in switch mode power supply and high-voltage generation system ensures the DC output voltage remains stable and accurate while its precision sensitivity control gives the user confidence in the result of every test.

The Lab Pro2 is available in three kit variations; 6kV Kit, 40kV Kit and the 6kV Roller Kit.



Lab Pro2 6kV Kit - 6002-0111



Lab Pro2 40kV Kit - 6002-0194



Lab Pro2 6kV Roller Kit - 6002-0110

Features

- Compact and portable
- Simple to use
- Mains powered
- Multicolour display
- Menu available in EN, FR, DE, ES, IT, PT, PI, TR, RU, NL
- Visual and audible alarm with volume control
- Accurate sensitivity control
- IP65 ingress protection rating
- Stable and accurate output voltage
- Robust powder-coated, cast aluminium enclosure
- One year 'back to base' warranty
- UKCA and CE approved

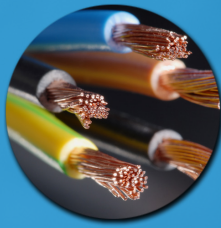
Specifications

- Mains supply voltage: 90-250V AC
- Output voltage range:
 - 6kV model: 0.5kV – 6kV
 - 40kV model: 0.9kV – 40kV
- Meter accuracy: <10kV: +/- 10V, >=10kV +/- 100V
- Sensitivity threshold range: 10µA - 450µA (factory-set to 200µA)
- Unit weight: 1.8kg
- Handle weight: 720g
- Packed weight:
 - 6kV and 40kV Kits: 8.25Kg
 - 6kV Roller Electrode Kit: 8.95Kg
- Unit dimensions: 260mm x 200mm x 90mm
- Handle dimensions: 290mm x 85mm
- Packed dimensions: 580mm x 440mm x 250mm
- Working altitude: <2000m
- Temperature range: 0°C - +40°C

What's in the kit?

- Lab Pro2 unit with desk stand
- Probe handle
- Interconnecting lead
- ESD Anti-static wristband
- Calibration certificate
- Mains power supply lead
- 150mm stainless steel drum brush electrode
- 5m earth lead on reel
- Pointed probe electrode
- Roller electrode (6002-0110 only)

Specifically designed for testing



CABLE INSULATION



ELECTRIC MOTORS



HI POT TESTING



BATTERIES



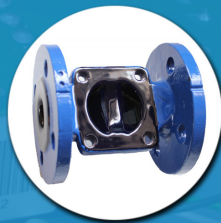
WIRED ASSEMBLIES



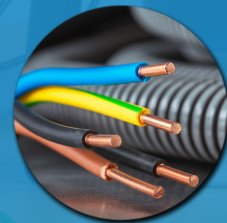
PRINTED CIRCUIT BOARDS



TANK LININGS



GLASS-LINED VALVES



NON-CONDUCTIVE COATINGS

Accessories and Electrodes



332mm mid-section
extension rod
6005-0459



332mm end-section
extension rod
6005-0460



Knurled thumb nut and
backnut for metric extension
rods
6005-0465



Earth lead 5m
6005-0073



Earth lead 10m
6005-0074



Pointed probe - 75mm long
6005-0236



Carbon-twisted-in-wire brush
electrode
6005-0246



Carbon coated drum brush
electrode
6005-0445



Stainless steel drum-brush
150mm
6005-0237



Flexible probe - 150mm long
6005-0239

For more information on Buckleys products, call our sales team on +44 (0)1303 278888, email sales@buckleys.co.uk or visit: www.buckleysinternational.com

Buckleys House, Unit G, Concept Court, Shearway Business Park, Shearway Road, Folkestone, Kent CT19 4RG, UK

Tel: +44 (0)1303 278888 email: sales@buckleys.co.uk



www.buckleysinternational.com